

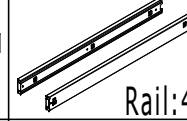
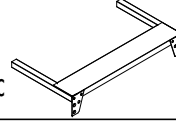
Top Plate:1Pc

Front Panel:4Pcs

Front Drawer Seal:4Pcs

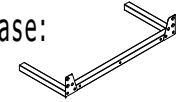
Back Drawer Seal:4Pcs

Front Base:1Pc

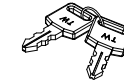


Rail:4Sets

Back Base:1Pc

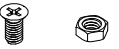


Hanging Rod:4Pcs



Key:1Set

M5x12 Self-tapping Screw:6Pcs



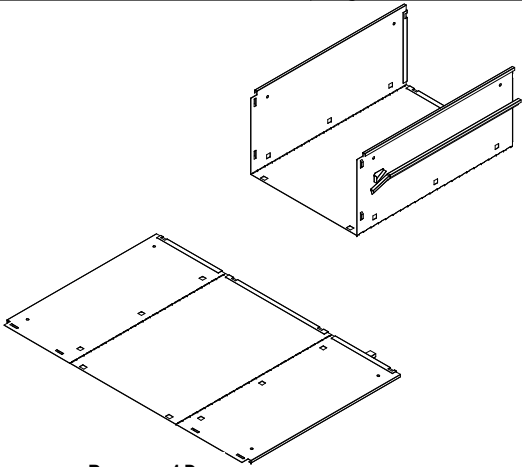
M6x12 Screw:8Sets

Left Side:1Pc

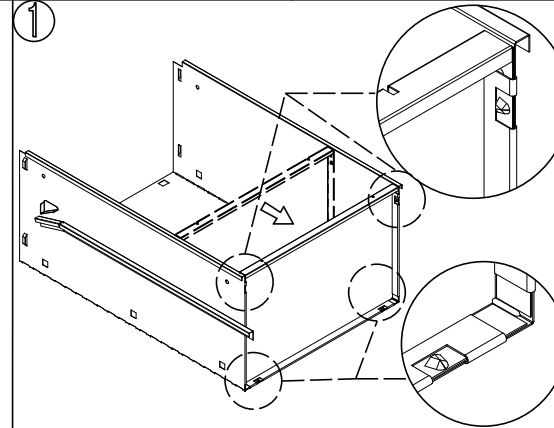
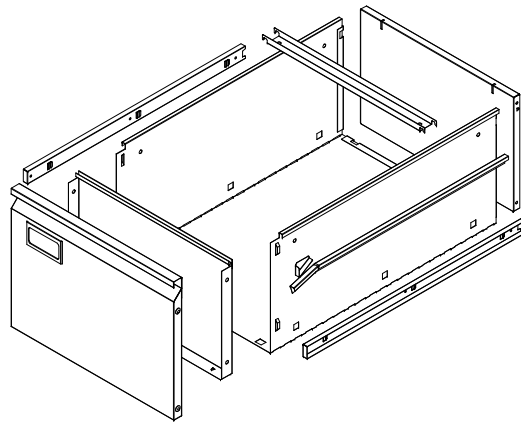
Right Side:1Pc

Back Plate:1Pc

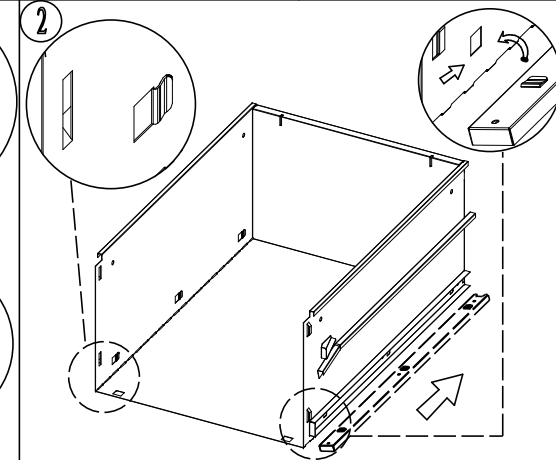
Lock Rod:1Pc



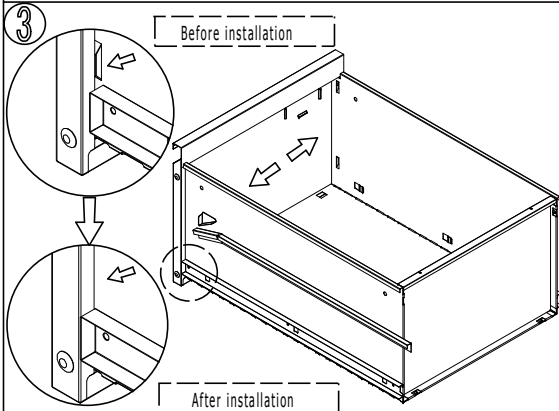
Drawer Box: 4Pcs



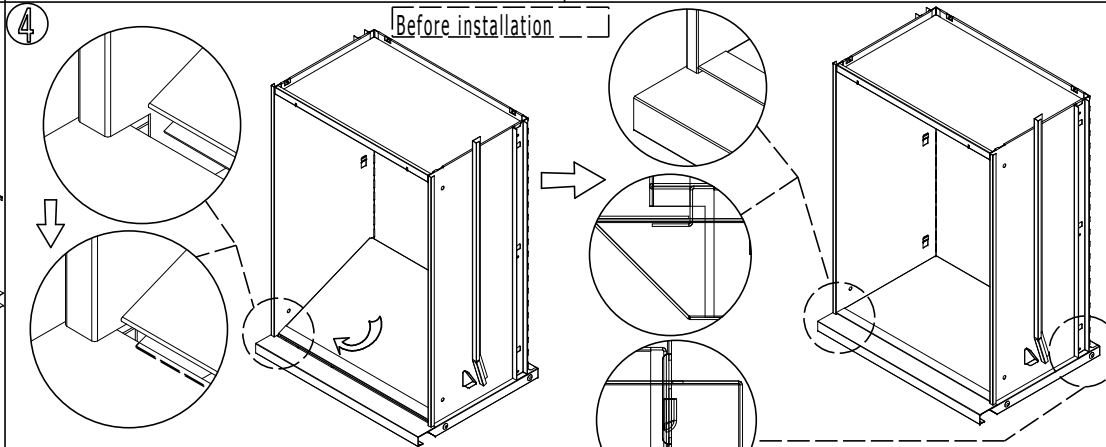
Push the back seal to the end.



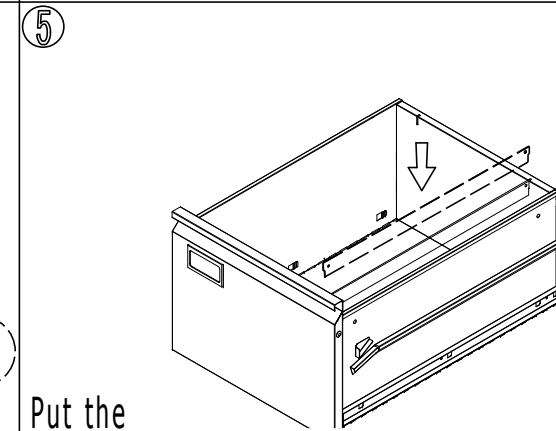
Install the inner rails.



Install the front panel.



Install the front drawer seal.



Put the hanging rods onto the drawers.